

SITE PLAN GENERAL NOTES

CURRENT USE: B
PROPOSED USE: B
CURRENT ZONING: CITY CENTER
PROPOSED ZONING: CITY CENTER

SITE PLAN KEY NOTES

- LOCATE EXTERIOR MENU SYSTEM AT 5th CAR FROM THE DRIVE THRU WINDOW, PREVIEW BOARD AT 1st CAR BEHIND. REFER TO SITE PLAN. EXTERIOR MENU SYSTEM TO COMPRISE ORDER SPEAKER TOWER CANOPY, MULTI-PANEL MENU BOARD, 18"X54" GROUND LOOP, AND SAFETY BOLLARD
- DS-1 PAINT TEMPLATE FOR GRAPHIC (AVAILABLE THROUGH NATL. ACCOUNTS); "STARTING LINE" TP-01 WHITE; "START" TP-01. PROPERLY PREP THE ASPHALT BEING PAINTED VIA PRESSURE WASH BEFORE PAINTING THE "AMERICA RUNS ON DUNKIN" STENCIL AT DRIVE THRU.
- CONCRETE PAD AT DRIVE THRU LOOP/DETECTORS SHOULD MATCH THE ADJACENT LOT SURFACE MATERIAL AS MUCH AS POSSIBLE-PROVIDE BLACK STAINED CONCRETE WHEN USED ADJACENT TO ASPHALT MATERIAL.
- NEW BARRIER FREE RAMP.
- G.C. TO COORDINATE W/ FRANCHISEE EXACT SIZE OF PAD FOR MENUBOARD, SPEAKER TOWER, CANOPY & ORDER CONFIRMATION BOARD - SEE WEBSITE FOR MOUNTING REQUIREMENTS & FOR COMPLETE INSTALLATION INFORMATION AND DETAILS, <http://extiranel.dunkinbrands.com>
- G.C. TO PROVIDE PVC CONDUIT FOR ALL NEW LOCATIONS, REFER TO ELECTRICAL DRAWING FOR ADDITIONAL INFORMATION ON LOOP REQUIREMENTS; SAW-CUT AT EXISTING LOCATION WHERE NECESSARY (TYP.)
- HOME RUN CONDUIT TO DRIVE THRU TIMER MONITOR ADJACENT TO DRIVE THRU WINDOW.

GENERAL SITE NOTES

- LOOP PLACEMENT IS DEFINED IN TERMS OF WHERE THE VEHICLE ENGINE BLOCK WOULD BE OVER THE LOOP IF THE CENTER OF THE DRIVER'S SIDE WINDOW IS AT THE SERVICE POINT. THE GOAL IS TO ENSURE THERE IS ONLY ROOM FOR ONE VEHICLE BEHIND THE PREVIOUS LOOP AND THE MERGE POINT; THIS IS HOW SEQUENCING IS POSSIBLE.
- REFER TO ELECTRICAL DRAWINGS FOR FURTHER INFORMATION ON CONDUIT LOCATIONS AND QUANTITY CORRESPONDING TO EACH DRIVE THRU SET UP OPTION.
- REFER TO SCHEDULE FOR TRAFFIC STRIPING PAINT.
- G.C. TO PROVIDE FOUNDATION, ANCHOR BOLTS, CAGE, PVC CONDUIT AND ALL RELATED ACCESSORIES PRIOR TO INSTALLATION FOR ALL NEW SITE FIXTURES INCLUDING; SIGNS, LIGHT POLES, CONCRETE PADS, DUMPSTER ENCLOSURES, ETC. SIGN VENDOR TO SUPPLY SIGN FIXTURES.
- REFER TO CIVIL SHEETS FOR ADDITIONAL SITE AND EXISTING CONDITIONS INFORMATION.

NEW WELCOME POINT BRANDED GATEWAY WITH HEIGHT LIMITATION BAR REFER TO DETAIL, GATEWAY TO BE PROVIDED AND INSTALLED BY SIGN VENDOR. GC TO INSTALL FOUNDATION

NEW EASTERN REDBUD TREE (CERCIS CANADENSIS). MATURE SPREAD 25'W x 20'T

EXISTING STORM WATER DRAIN

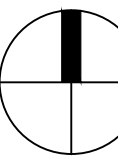
EXISTING CURB CUT

DRIVE THRU BRANDED GRAPHIC (SEE NATL. ACCOUNTS), PAINT TP-01 WHITE, REMOVE EXISTING PAINTED ARROW AS REQUIRED, TYP.

NEW DIRECTIONAL SIGN "WELCOME BACK" / "SEE YOU SOON" - SEE DETAIL SHEET

EXISTING GAS SERVICE

NEW AUTUMN BLAZE RED MAPLE SHADE TREE (ACER X FREEMANII 'JEFFERSRED'), MATURE SPREAD 40'W x 40'T



ARCHITECTURAL SITE PLAN

SCALE: 1" = 20'-0"

NOTE: ALL DIMENSIONS ARE TO EXISTING ELEMENTS TO REMAIN AND ARE FOR REFERENCE ONLY.

TRAFFIC STRIPING PAINT					VENDOR CONTACTS
CODE	MATERIAL	MANUFACTURER	PRODUCT #	DESCRIPTION	
TP-01	PAINT	SHERWIN WILLIAMS	PRO PARK	"WHITE": B97WD2434	PLACE ORDER WITH LOCAL SHERWIN WILLIAMS STORE FOR A STORE NEAR YOU CALL: 800-474-3794
TP-02	PAINT	SHERWIN WILLIAMS	PRO PARK	"BLUE": B97LD2022	

ARCHITECT:



jeffery a. scott
architects p.c.

32316 grand river ave.
suite 200
farmington, mi 48336
248-476-8800
JSCOTTARCHITECTS.COM

copyright © 2023

INSPIRE
Brands

SHEET TITLE:

ARCHITECTURAL
SITE PLAN

PROJECT:

DUNKIN'

801 E. DIXIE DR.
WEST CARROLLTON, OH 45449
PC# 364756 COOL PALETTE

ISSUED FOR:

SPA	4/30/2024
SPA	6/18/2024
SPA	7/11/2024

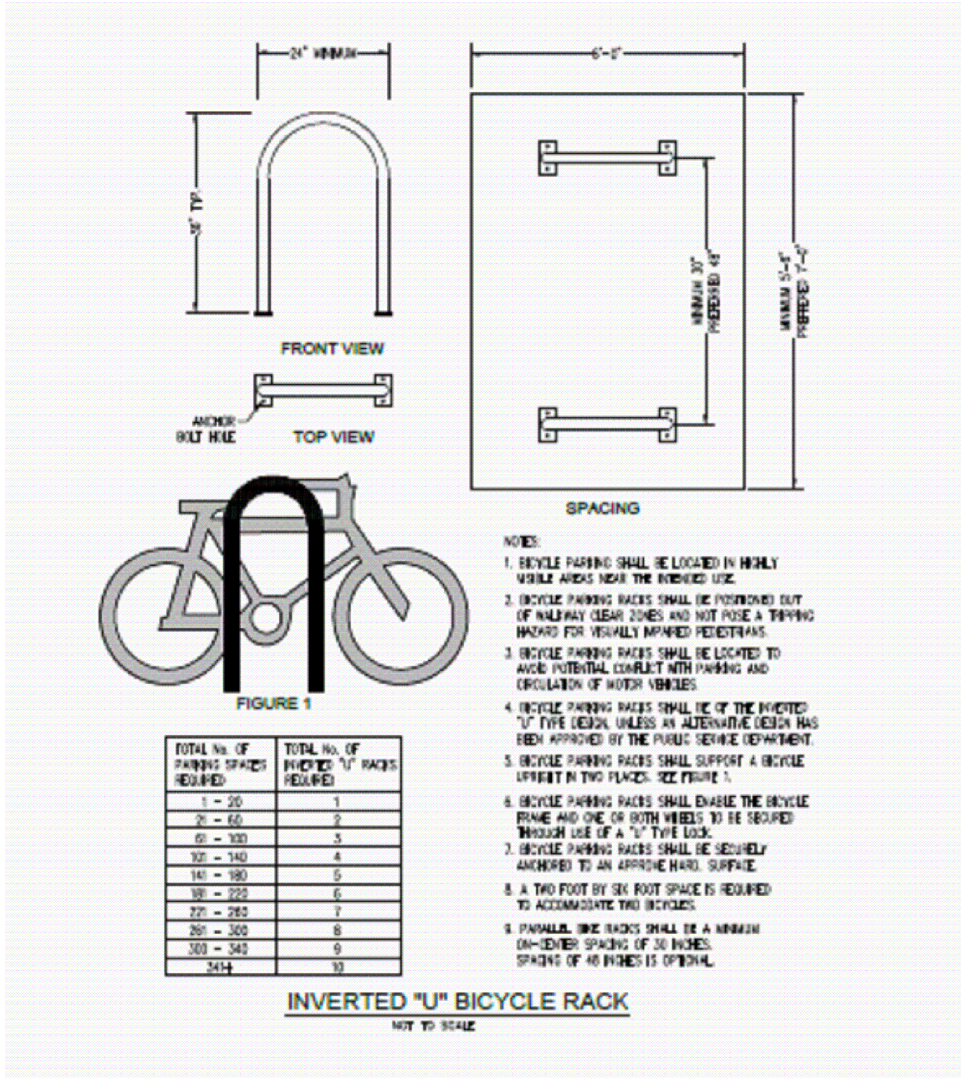
DO NOT SCALE PRINTS
USE FIGURED DIMENSIONS ONLY
JOB NO.

23131

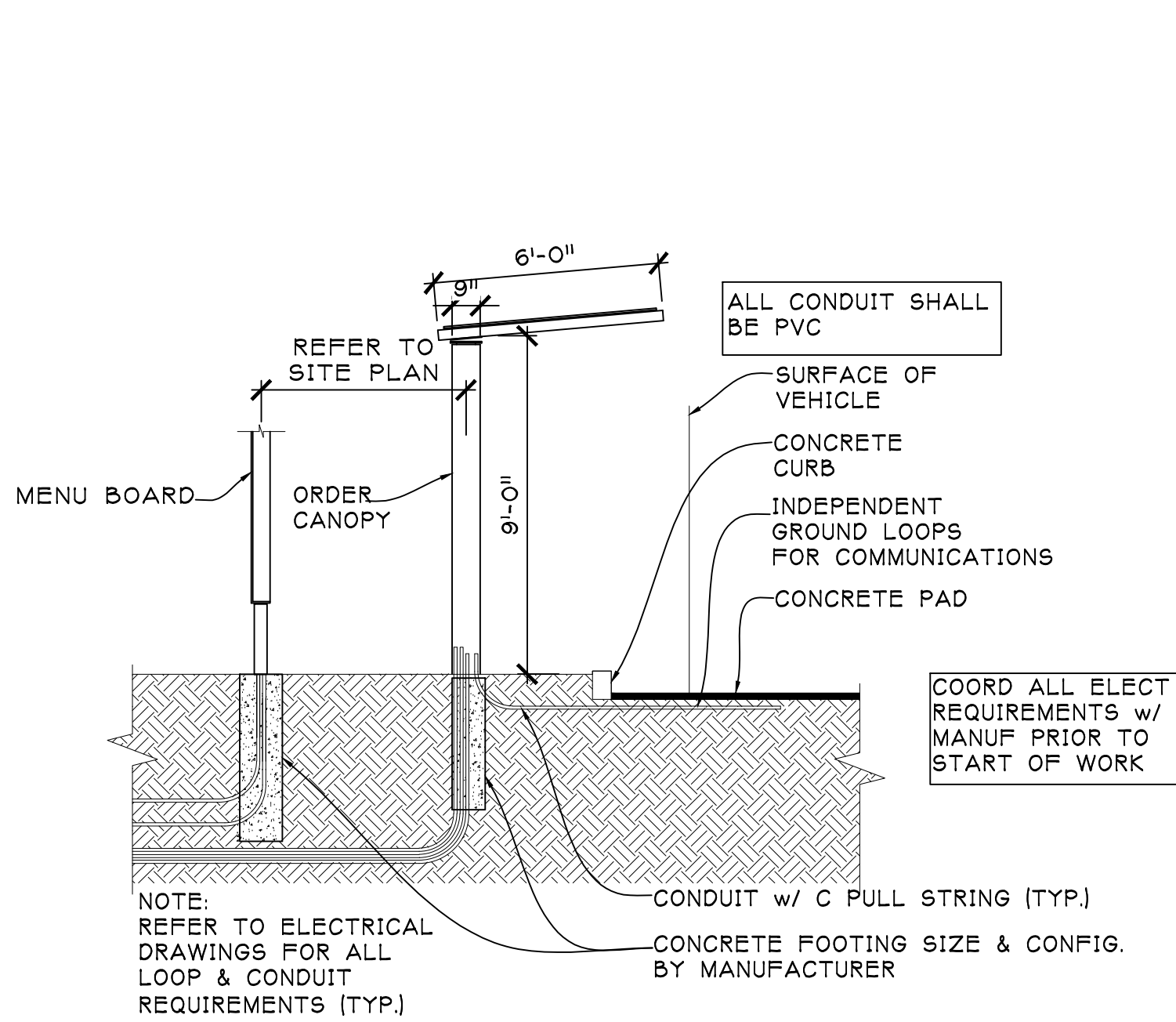
SHEET NO.

ASP-1

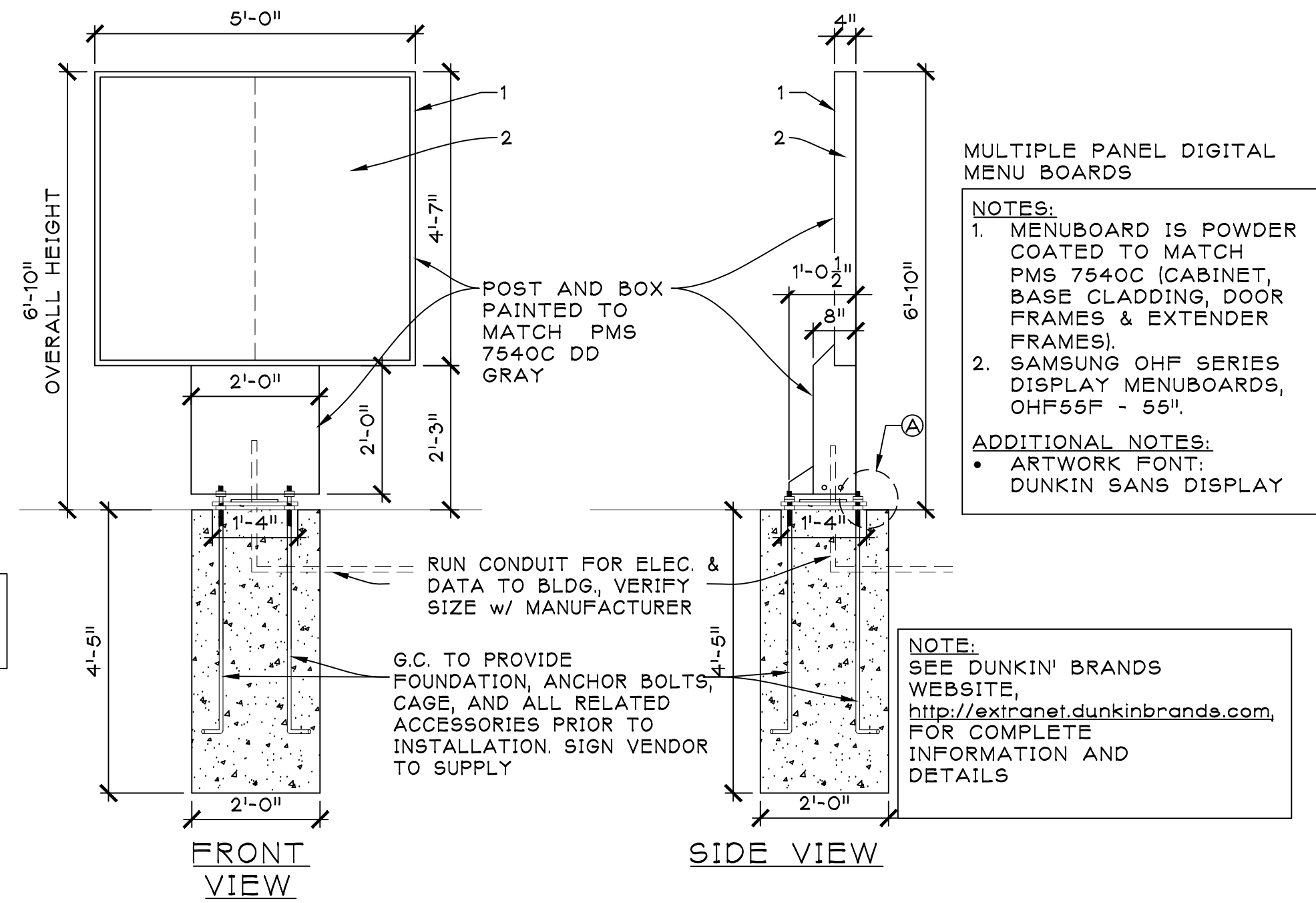
PLOT SIZE: 36"X24"



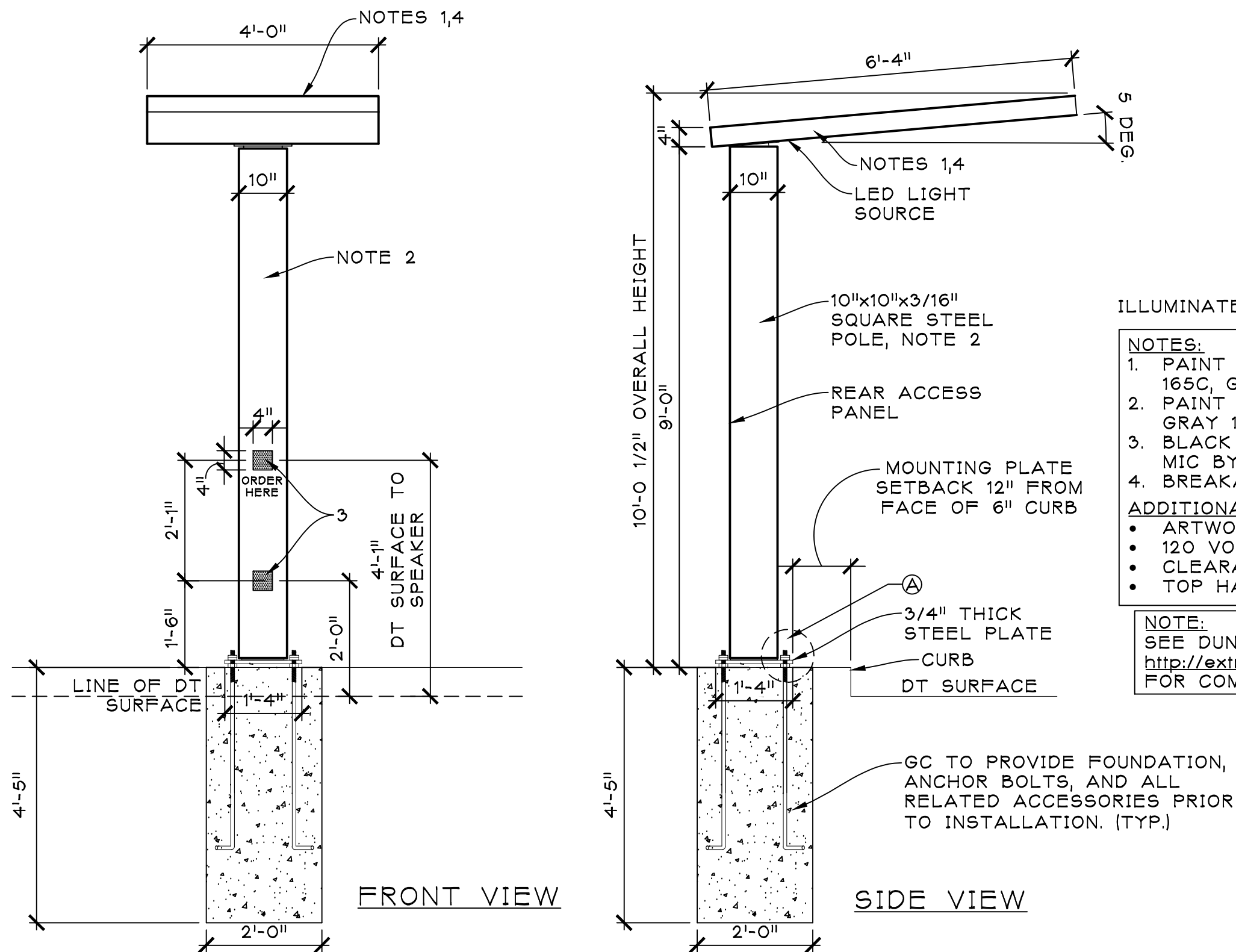
20 BIKE RACK DETAIL
SD-1 SCALE: N.T.S.



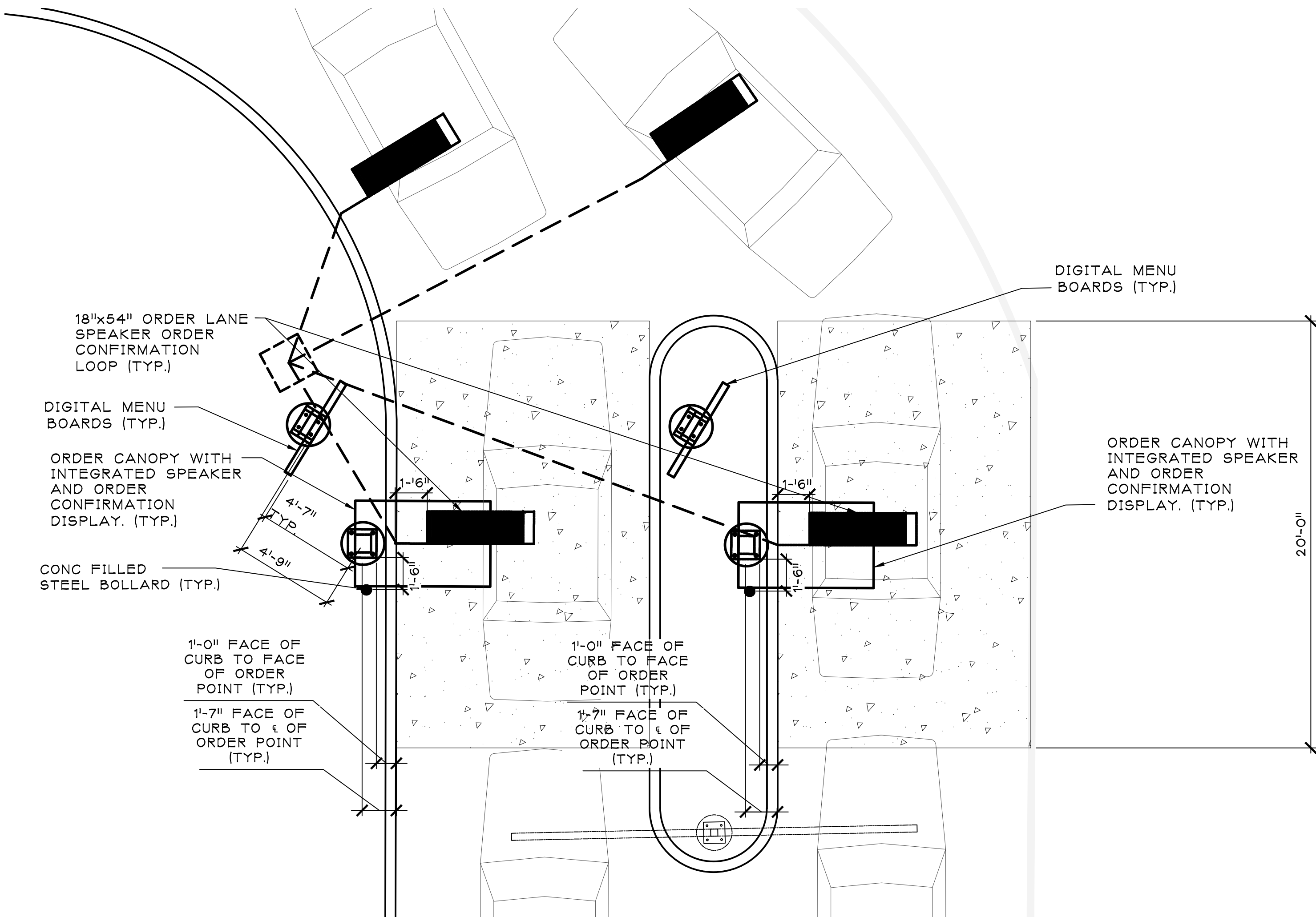
13 DRIVE-THRU MENU SECTION
SD-1 SCALE: N.T.S.



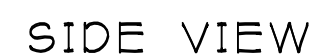
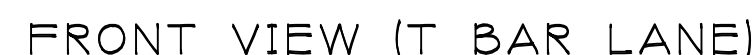
12 DIGITAL MENU BOARD
SD-1 SCALE: 1/4"=1'-0"



11 ORDER CANOPY DETAIL
SD-1 SCALE: 1/2"=1'-0"



10 DRIVE THRU ENLARGED PLAN
SD-1 SCALE: 1/4"=1'-0"



NOTE:
SEE DUNKIN' BRANDS WEBSITE,
<http://extranet.dunkinbrands.com>,
FOR COMPLETE INFORMATION AND DETAILS

SIGNAGE BOX AREA: 2.75 SQ. FT.
LED ILLUMINATED DIRECTIONAL SIGN

NOTES:

1. 5" x 1" x .063" ALUMINUM SPACE FRAME.
2. 1" ALUMINUM RETAINER.
3. 1" x 1" x 1/8" ALUMINUM ANGLE.
4. 4" x 4" x .075" SQUARE TUBE SUPPORT PAINTED ORANGE PMS 165C
5. GE TETRA MAX 7100K WHITE LEDS.
(OR GE REPLACEMENT EQUIVALENT).
6. LED POWER SUPPLIES, AS REQUIRED.
7. 18" CLEAR SOLAR-GRADE POLYCARBONATE FACE 2ND SURFACE.
BACKGROUNDO COLOR: BE 403 WHITE BACK-SPRAY.
8. 3M #3630-3123 DUNKIN' ORANGE TRANSLUCENT FILM 2ND SURFACE.
9. 3M #3630-1379 DUNKIN' PINK TRANSLUCENT FILM 2ND SURFACE.
10. 3M #7125-41 DUNKIN' GRAY TRANSLUCENT FILM 2ND SURFACE.

ADDITIONAL NOTES:

- ARTWORK FONT: DUNKIN SANS DISPLAY
- EXTERIOR FINISH: PAINT PANTONE 7540C
- INTERIOR FINISH: PAINTED REFLECTIVE WHITE
- RETAINERS / FACE REMOVABLE FOR SERVICE ACCESS
- ELECTRICAL: (1) 20-AMP / 120 VOLT CIRCUIT
- U.L. LISTED



NOTES:

1. PAINT TO MATCH ORANGE PMS 165C, GLOSS FINISH.
2. PAINT TO MATCH PINK PMS 219C, GLOSS FINISH.
3. PAINT TO MATCH PMS COOL GRAY 1C, GLOSS FINISH.
4. OPTIONAL 24" x 24" MEDALLION SIGN WITH REMOVABLE / ADJUSTABLE PLATES, SINGLE SIDED VINYL.
5. OPTIONAL REFLECTIVE FILM;
3M IJ680CR-10 SCOTCHLITE REFLECTIVE
MCS (LATEX OR SOLVENT INKS)
8519 LUSTER PROTECTIVE LAMINATE PRINTED TO MATCH.

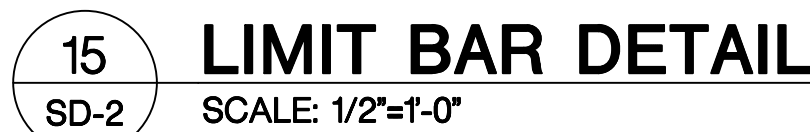
- PMS 165 DUNKIN' ORANGE
- PMS 219 DUNKIN' PINK
- PMS 7540C DUNKIN' GRAY
- PMS COOL GRAY 1C

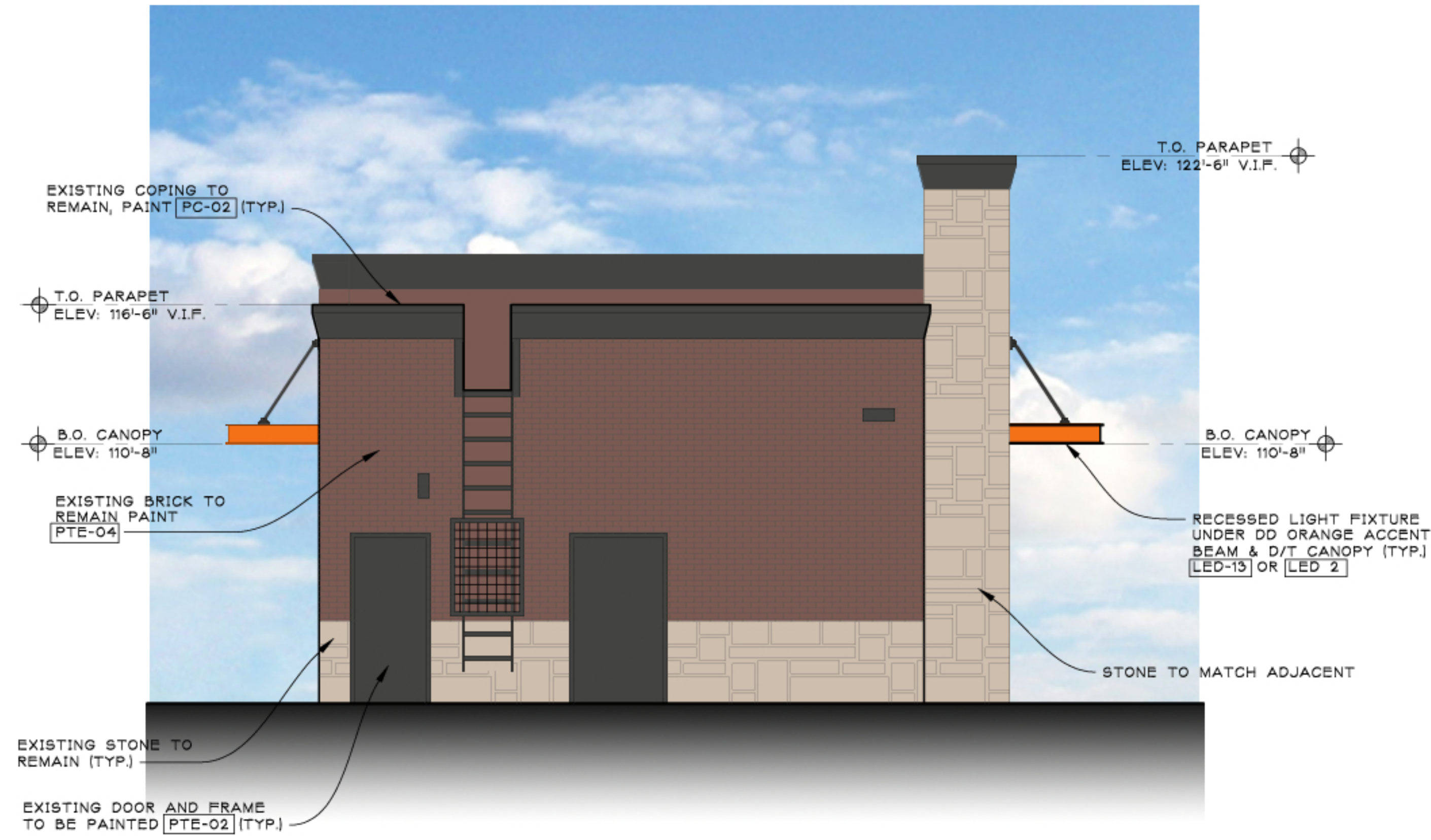
NOTE:
SEE DUNKIN' BRANDS WEBSITE, <http://extranet.dunkinbrands.com>
FOR COMPLETE INFORMATION AND DETAILS

ADDITIONAL NOTES:

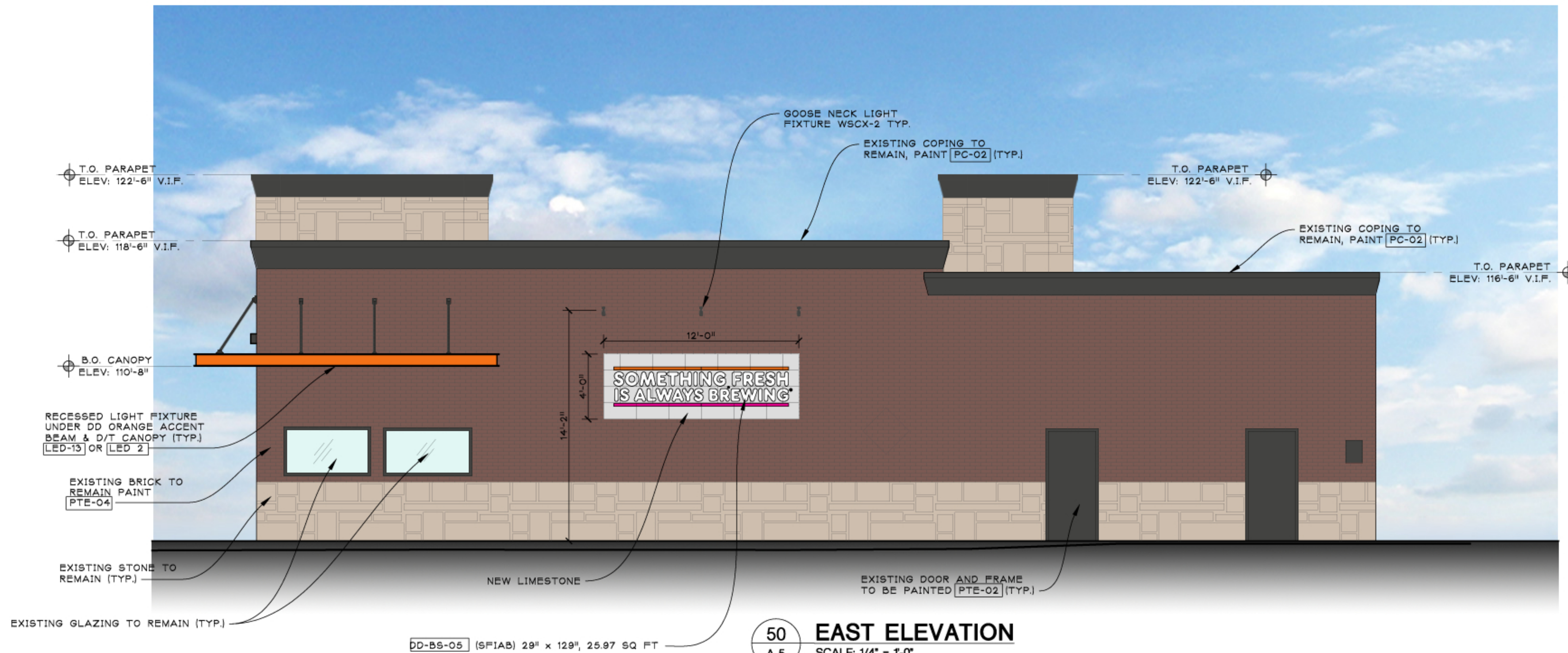
- ARTWORK FONT: DUNKIN SANS DISPLAY
- 120 VOLT CIRCUIT, TO BE CONFIRMED BY SITE
- CLEARANCE TO BE CONFIRMED BY SITE

NOTE:
INSTALLER MUST BE SURE TO SHIM CANOPY PLATE AT BOTTOM, AND ADJUST ANCHOR BOLTS AT BOTTOM OF COLUMN SO THAT THE CANOPY SITS WITH A 1/4" / FT FALL FROM OPEN SIDE TO POLE SIDE SO WATER WILL DRAIN OFF POLE SIDE.





51 NORTH ELEVATION
A-5 SCALE: 1/4" = 1'-0"



50 EAST ELEVATION
A-5 SCALE: 1/4" = 1'-0"

ARCHITECT:

ja
jeffery a. scott
architects p.c.

32316 grand river ave.
suite 200
farmington, mi 48336
248-476-8800
JSCOTTARCHITECTS.COM

copyright © 2023

INSPIRE
Brands

SHEET TITLE:

**EXTERIOR
ELEVATIONS**

PROJECT:

DUNKIN'
801 E. DIXIE DR.
WEST CARROLLTON, OH 45449
PC# 364756 COOL PALETTE

ISSUED FOR:

EDP

7/8/2024

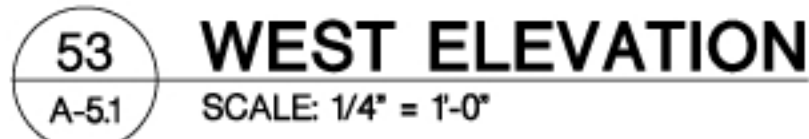
DO NOT SCALE PRINTS
USE FIGURED DIMENSIONS ONLY
JOB NO.

23131

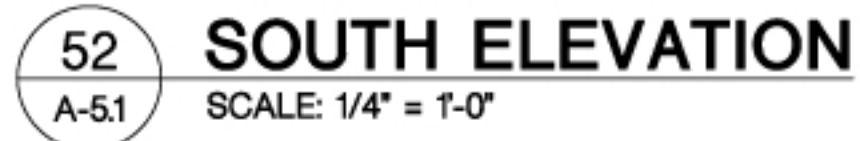
SHEET NO.

A-5

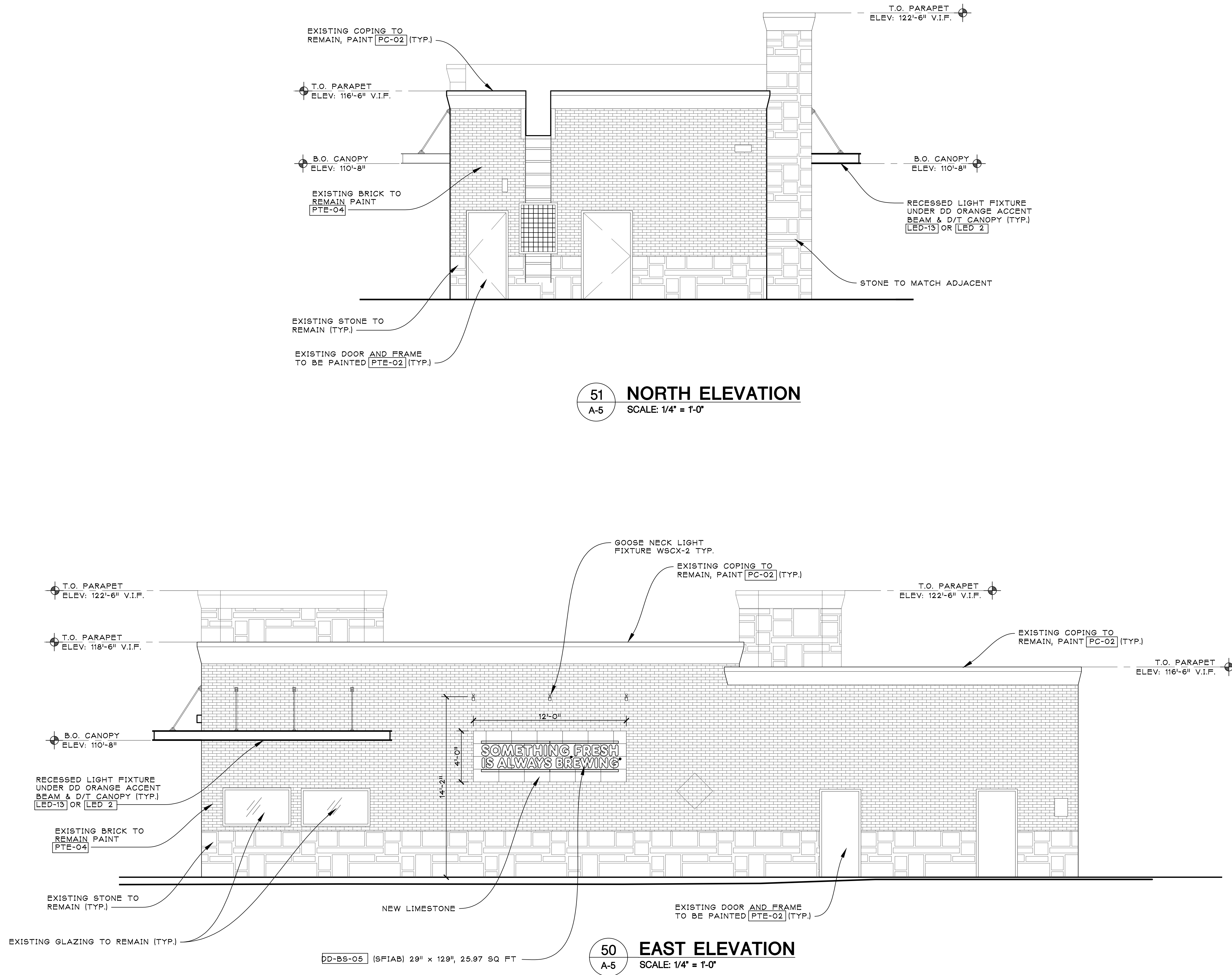
PLOT SIZE: 36"X24"

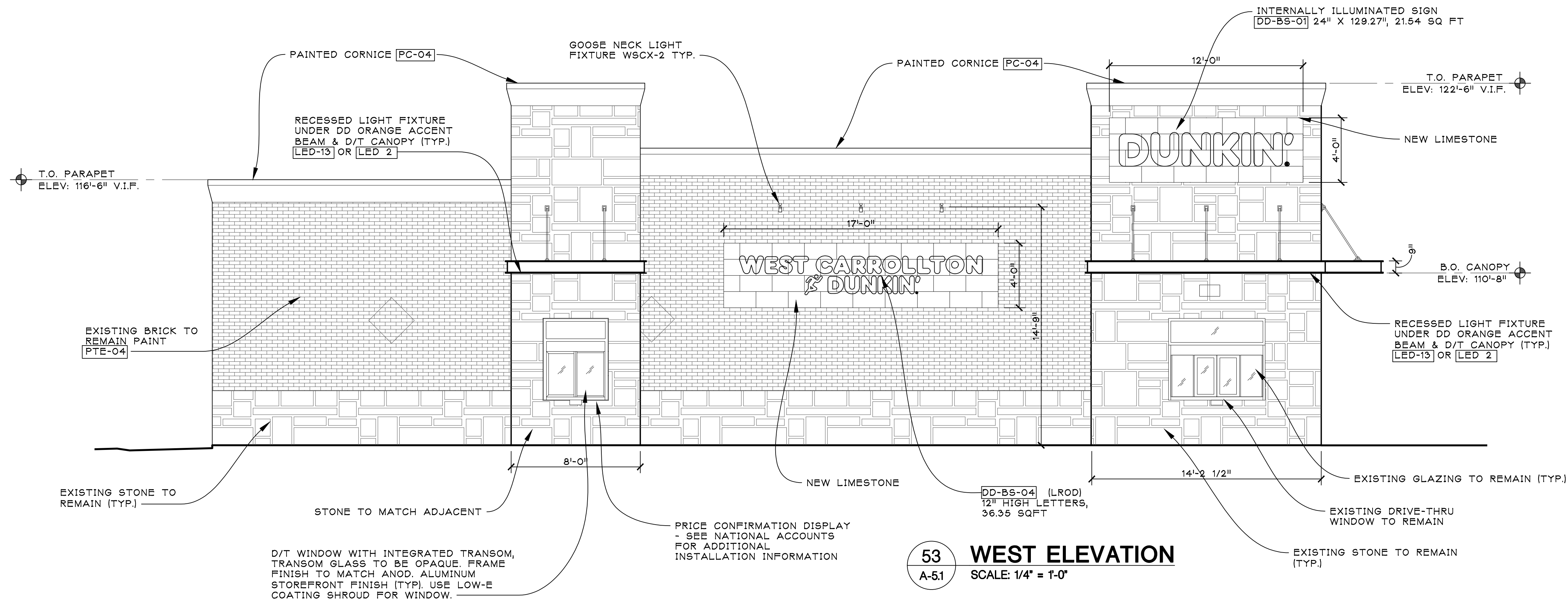


EXTERIOR FINISH MATERIAL SCHEDULE					
CODE	MATERIAL	MANUFACTURER	PRODUCT #	DESCRIPTION/ REMARKS	VENDOR INFORMATION
PTE-02	PAINT	SHERWIN WILLIAMS	CHARCOAL FINISH	SW 7069 "IRON ORE"	MARK T. WEINER NATIONAL ACCOUNT EXECUTIVE 2024-2025
PC-02	PAINTED COATING	SHERWIN WILLIAMS	CHARCOAL FINISH	SW 7069 "IRON ORE"	
PC-04	PAINTED COATING	SHERWIN WILLIAMS	OFF WHITE FINISH	SW 7063 "NEBULOUS WHITE"	
PC-12	PAINTED COATING	SHERWIN WILLIAMS	DD PINK FINISH	COLOR MATCH PMS 219 C	

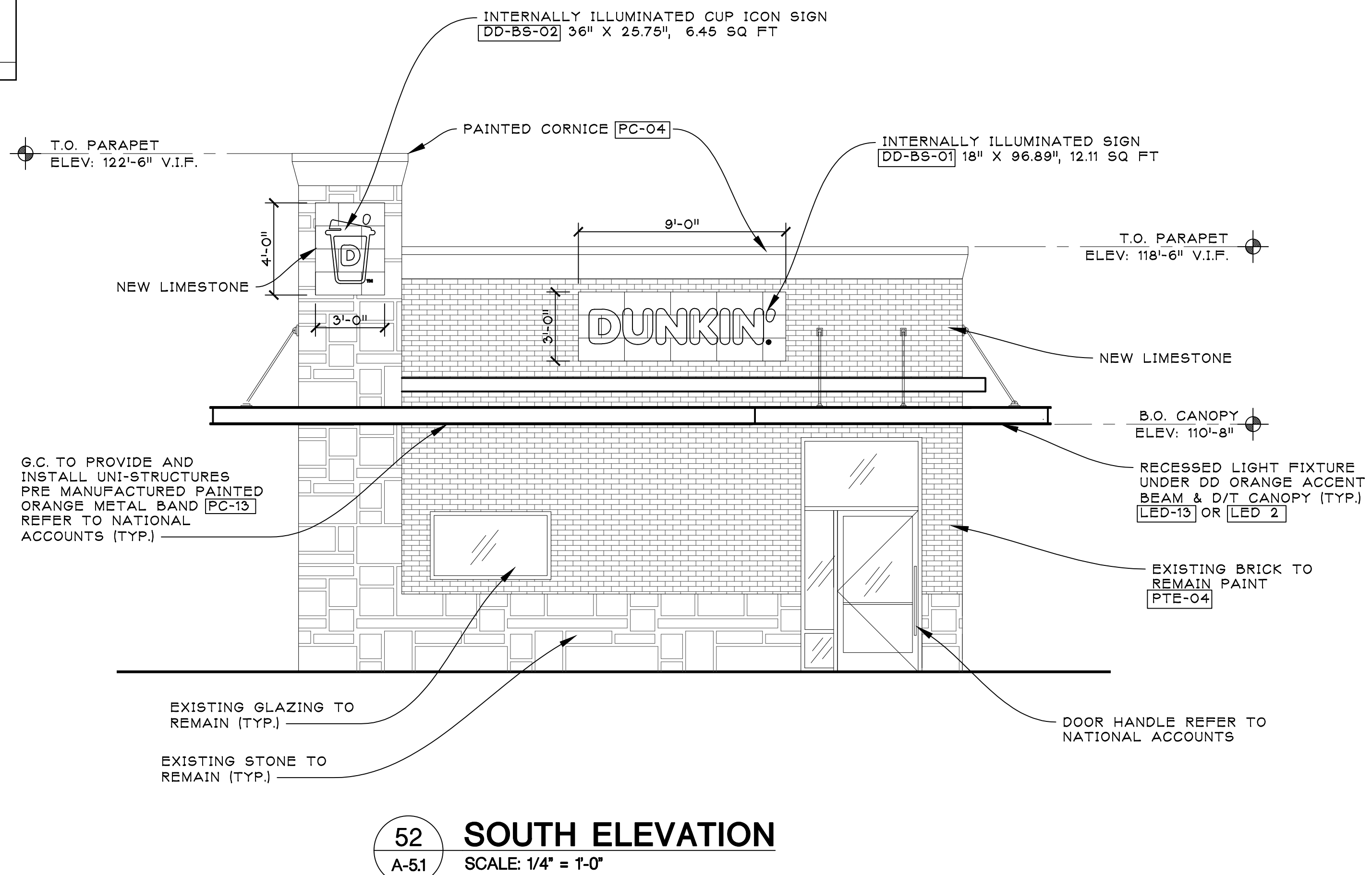


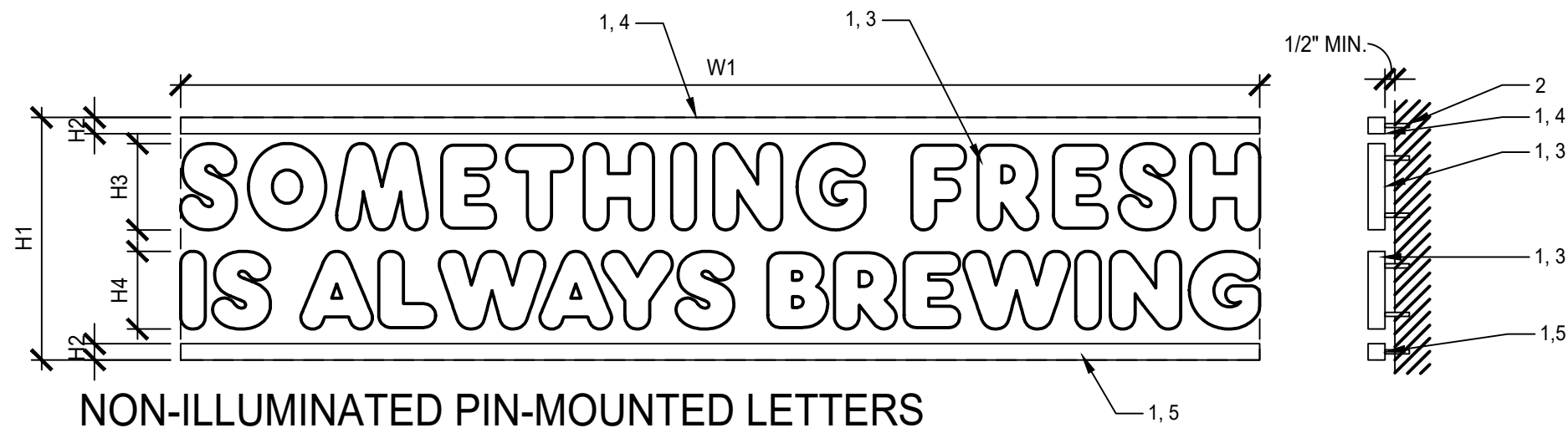
52 SOUTH ELEVATION
A-5.1 SCALE: 1/4" = 1'-0"





EXTERIOR FINISH MATERIAL SCHEDULE					
CODE	MATERIAL	MANUFACTURER	PRODUCT #	DESCRIPTION/ REMARKS	VENDOR INFORMATION
PTE-02	PAINT	SHERWIN WILLIAMS	CHARCOAL FINISH	SW 7069 "IRON ORE"	MARK T. WEINER NATIONAL ACCOUNT EXECUTIVE 364756 COOL PALETTE
PC-02	PAINTED COATING	SHERWIN WILLIAMS	CHARCOAL FINISH	SW 7069 "IRON ORE"	
PC-04	PAINTED COATING	SHERWIN WILLIAMS	OFF WHITE FINISH	SW 7063 "NEBULOUS WHITE"	
PC-12	PAINTED COATING	SHERWIN WILLIAMS	DD PINK FINISH	COLOR MATCH PMS 219 C	



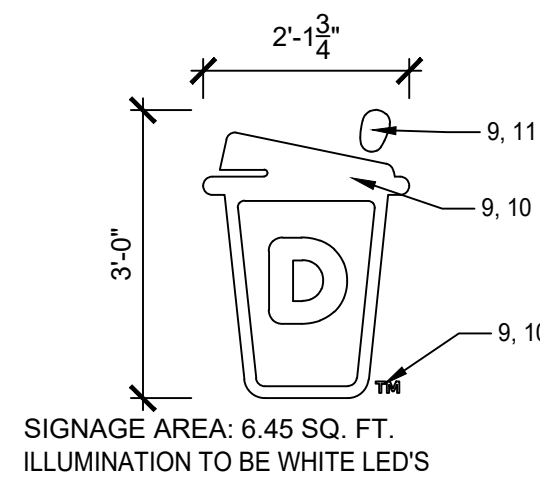


NON-ILLUMINATED PIN-MOUNTED LETTERS

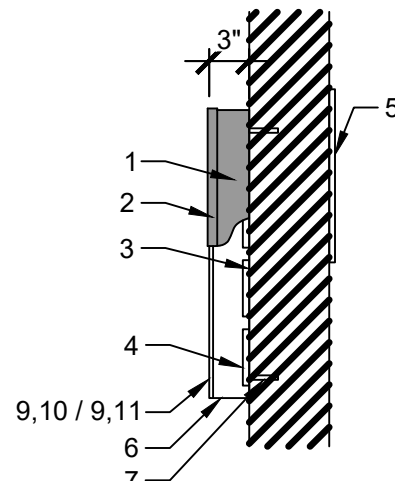
GENERAL NOTES:
1. 3/4" ROUTED PVC BARS & LETTERS 2. MOUNTING STUDS AS REQUIRED PER SITE CONDITIONS. LETTERS SHOULD BE PIN MOUNTED WITH AT LEAST A 1/2" SPACING BETWEEN BACK OF LETTER / BAR AND MOUNTING SURFACE. 3. LETTERS FACES & RETURNS PAINTED WHITE TO MATCH 3M #7725-10 OPAQUE WHITE FILM 4. BARS FACES & RETURNS PAINTED ORANGE PMS 165 C 5. BARS FACES & RETURNS PAINTED PINK PMS 219 C
ADDITIONAL NOTES:
ARTWORK FONT : DUNKIN SANS DISPLAY LETTERS SHOULD BE PIN MOUNTED WITH AT LEAST A 1/2" SPACING BETWEEN BACK OF LETTER / BAR AND MOUNTING SURFACE.

SIZE	H1	H2	H3	H4	W1	S.F. (BOX)
SMALL	21.75"	1.5"	7.75"	7"	96.75"	14.61'
MEDIUM	29"	2"	10.25"	9.25"	129"	25.97'
LARGE	36.25"	2.5"	13"	11.5"	161.25"	40.58'
CUSTOM	-	-	-	-	-	-

56 "SFIAB" STACKED BUILDING SIGN
SCALE: 1/2"=1'-0"



ELEVATION

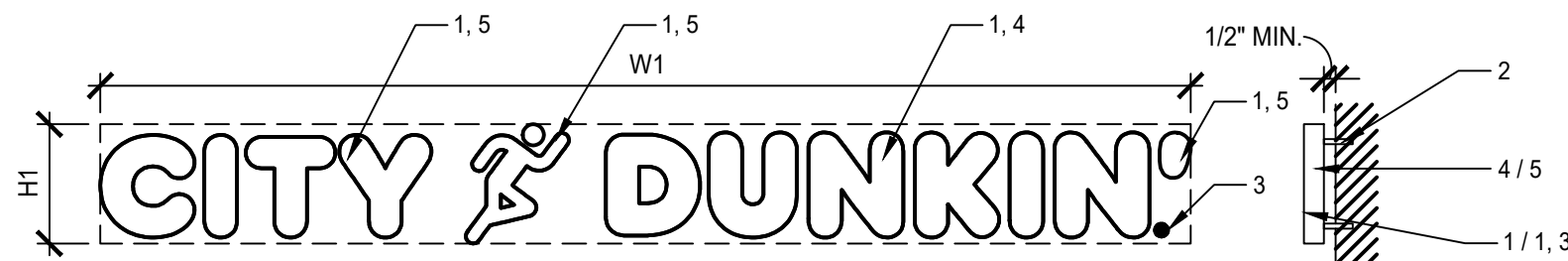


SIDE VIEW

36" H " DD " SECONDARY BLDG. SIGN

GENERAL NOTES:
1. .05" x 5" ALUMINUM RETURNS PAINTED TO MATCH PMS 7540C 2. 1" TRIM CAP TO MATCH JEWELITE S13 BRONZE 3. .063" ALUMINUM BACKING 4. GE TETRA MAX 7100K WHITE LED'S (OR GE REPLACEMENT EQUIVALENT) 5. REMOTE POWER SUPPLY, AS REQUIRED 6. DRAIN HOLES AS REQUIRED 7. MOUNTING HARDWARE, AS DETERMINED BY SITE CONDITIONS 8. .063" ALUMINUM DISK PAINTED WHITE (REGISTERED 'TD') 9. 3/16" THICK WHITE ACRYLIC FACE 10. 3M #9330-3123 DUNKIN ORANGE TRANSLUCENT FILM 1ST SURFACE 11. 3M #9330-1379 DUNKIN PINK TRANSLUCENT FILM 1ST SURFACE
ADDITIONAL NOTES:
ARTWORK FONT : DUNKIN SANS DISPLAY CHANNEL LETTER INTERIOR PAINTED REFLECTIVE WHITE ELECTRICAL: (1) 26-AMP / 120 VOLT CIRCUIT U.L. LISTED LED'S TO BE POPULATED FOR EVEN AND CONSISTENT LIGHTING WITHOUT HOT SPOTS OR SHADOWS

58 SECONDARY BLDG. SIGN DETAILS
SCALE: 1/2"=1'-0"

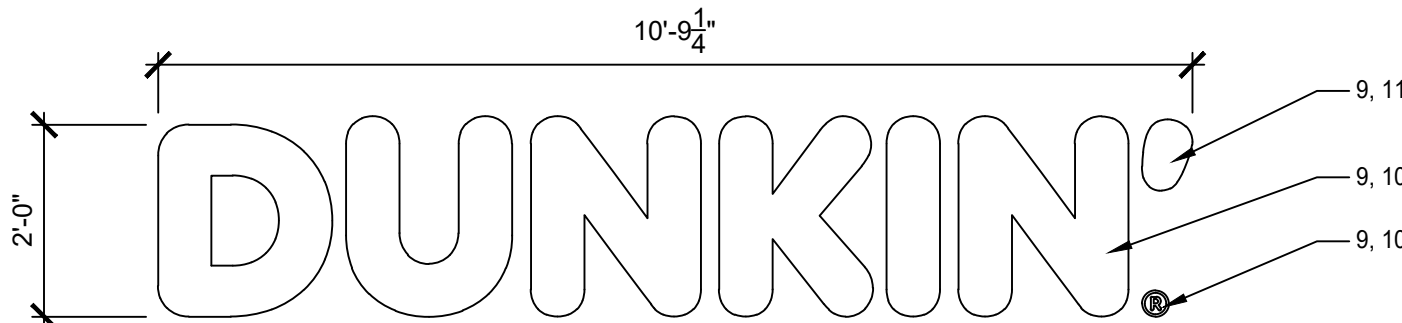


NON-ILLUMINATED PIN-MOUNTED LETTERS

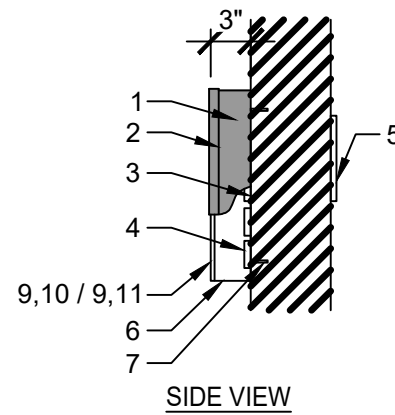
GENERAL NOTES:
1. 3/4" ROUTED PVC LETTERS AND ROUTED PVC MAP 2. MOUNTING STUDS AS REQUIRED PER SITE CONDITIONS. LETTERS SHOULD BE PIN MOUNTED WITH AT LEAST A 1/2" SPACING BETWEEN BACK OF LETTER / BAR AND MOUNTING SURFACE. 3. ROUND PVC DISK PAINTED ORANGE PMS 165 C (REGISTERED "R") 4. "DUNKIN" LETTERS FACES & RETURNS PAINTED ORANGE PMS 165 C 5. CITY MAP, MAN, AND APOSTROPHE (') FACES & RETURNS PAINTED PINK PMS 219 C
ADDITIONAL NOTES:
ARTWORK FONT : DUNKIN SANS DISPLAY LETTERS SHOULD BE PIN MOUNTED WITH AT LEAST A 1/2" SPACING BETWEEN BACK OF LETTER / BAR AND MOUNTING SURFACE. ALLOWABLE TO STACK MESSAGING, HOWEVER NOT A PROTOTYPICAL STANDARD. DESIGN PROPOSAL REQUIRES FINAL APPROVAL FROM DBI DESIGNER BEFORE FABRICATION.

SIZE	H1	W1	S.F. (BOX)
SMALL	9"	VARIES	VARIES
MEDIUM	12"	VARIES	VARIES
LARGE	15"	VARIES	VARIES
CUSTOM	-	-	-

57 "LROD" HORIZONTAL BUILDING SIGN
SCALE: 1/2"=1'-0"



ELEVATION

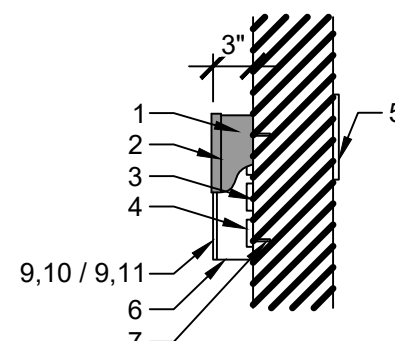


SIDE VIEW

24" H " DUNKIN' " PRIMARY BLDG. SIGN



ELEVATION



SIDE VIEW

18" H " DUNKIN' " PRIMARY BLDG. SIGN

GENERAL NOTES:
1. .05" x 5" ALUMINUM RETURNS PAINTED TO MATCH PMS 7540C 2. 1" TRIM CAP TO MATCH JEWELITE S13 BRONZE 3. .063" ALUMINUM BACKING 4. GE TETRA MAX 7100K WHITE LED'S (OR GE REPLACEMENT EQUIVALENT) 5. REMOTE POWER SUPPLY, AS REQUIRED 6. DRAIN HOLES AS REQUIRED 7. MOUNTING HARDWARE, AS DETERMINED BY SITE CONDITIONS 8. .063" ALUMINUM DISK PAINTED WHITE (REGISTERED 'TD') 9. 3/16" THICK WHITE ACRYLIC FACE 10. 3M #9330-3123 DUNKIN ORANGE TRANSLUCENT FILM 1ST SURFACE 11. 3M #9330-1379 DUNKIN PINK TRANSLUCENT FILM 1ST SURFACE
ADDITIONAL NOTES:
ARTWORK FONT : DUNKIN SANS DISPLAY CHANNEL LETTER INTERIOR PAINTED REFLECTIVE WHITE ELECTRICAL: (1) 26-AMP / 120 VOLT CIRCUIT U.L. LISTED LED'S TO BE POPULATED FOR EVEN AND CONSISTENT LIGHTING WITHOUT HOT SPOTS OR SHADOWS

59 PRIMARY BLDG. SIGN DETAILS
SCALE: 1/2"=1'-0"

ARCHITECT:



32316 grand river ave.
suite 200
farmington, mi 48336
248-476-8800
JSCOTTARCHITECTS.COM
copyright © 2023



SHEET TITLE:

EXTERIOR SIGN
DETAILS

PROJECT:

DUNKIN'
801 E. DIXIE DR.
WEST CARROLLTON, OH 45449
PO# 364756 COOL PALETTE

ISSUED FOR:

SPA 6/16/2024
SPA 7/11/2024

DO NOT SCALE PRINTS
USE FIGURED DIMENSIONS ONLY
JOB NO.

23131

SHEET NO.

A-6

PLOT SIZE: 36"X24"